



Turned radial ball bearings

Turned radial bearing turned from solid bar. Made of 9SMnPb37con subsequent treatment of carbonitriding, stainless steel, brass or plastic. Are built mostly on specific customer requirements and replace conventional bearings in chromium steel in applications where high performance is not required.

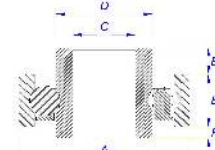
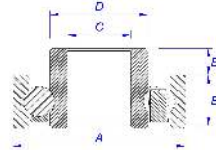
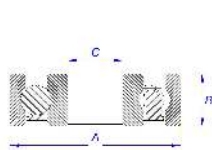
APPLICATIONS:

- FURNITURE, ESPECIALLY WARDROBES AND DRAWERS
- WINDOWS, DOORS, SLIDING PANELS
- AUTOMATIC GATE RAILS
- OVERHEAD CHAIN CONVEYORS
- PAINT BAKING OVEN DOORS

TYPES:

- RADIAL BEARING
- ROUND RADIAL BEARING
- GROOVE RADIAL BEARING
- RADIAL BEARING WITH PIN
- CAGELESS RADIAL BEARING
- SPECIAL RADIAL BEARING

TURNUED RADIAL BALL BEARING



CODE	DESCRIPTION	A	B	C	D	E	F
CT18X6F7M8B	GALVANIZED TURNED RADIAL B. BEARING Ø18X6 BORE 7 HUB 7	18	7	6	11	7	-
CT19X6F6B	GALVANIZED TURNED RADIAL B. BEARING Ø19X6 BORE 6	19	6	6	-	-	-
CT20X6F5M1½IAS	TURNED RADIAL B. BEARING Ø20X6 BORE 5 HUB 0,5 (ACETAL RESIN RING - STAINLESS STEEL INNER)	20	6	5	11	0,5	-
CT22X7F5M5AB	TURNED RADIAL B. BEARING Ø22X7 BORE 5 HUB 4 ZINCATO (ACETAL RESIN RING - GALVANIZED INNER)	22	7	5	12,5	4	-
CT22X7F6M5B	GALVANIZED TURNED RADIAL B. BEARING Ø22X7 BORE 6 HUB 5	22	7	6	12,5	5	-
CT22X7F7B	GALVANIZED TURNED RADIAL B. BEARING Ø22X7 BORE 7	22	7	7	-	-	-
CT22X7F8M1M1B	GALVANIZED TURNED RADIAL B. BEARING Ø22X7 BORE 8 DOUBLE HUB 1	22	7	8	12,5	1	1
CT22X7F8M3½B	GALVANIZED TURNED RADIAL B. BEARING Ø22X7 BORE 8 HUB 3½	22	7	8	12,5	3,5	-
CT22X7F8M5B	GALVANIZED TURNED RADIAL B. BEARING Ø22X7 BORE 8 HUB5	22	7	8	12,5	5	-
CT22X7F8B	GALVANIZED TURNED RADIAL B. BEARING Ø22X7 BORE 8	22	7	8	-	-	-
CT23X10F7RSBS	GALVANIZED, GREASED TURNED RADIAL B. BEARING Ø23X10 BORE 7 1RS	23	10	7	-	-	-
CT23X4F5M2M1.5I	STAINLESS STEEL TURNED RADIAL B. BEARING Ø24X4 BORE 5 HUB 2 HUB 1,5	24	4	5	9	2	1,5
CT24X5F5M1½M2I	STAINLESS STEEL TURNED RADIAL B. BEARING Ø24X5 BORE 5 HUB 1,5 HUB 2	24	5	5	9	1,5	2
CT24X12F5MAM4AB	GALVANIZED TURNED RADIAL B. BEARING Ø24X12 BORE 5MA HUB 4 (ACETAL RESIN RING - GALVANIZED INNER)	24	12	5MA	E13	4	-
CT24X4F7M2M1I	STAINLESS STEEL TURNED RADIAL B. BEARING Ø24X4 BORE 7 HUB 2 HUB 1	24	4	7	9	2	1
CT24X5F5MAM5½I	STAINLESS STEEL TURNED RADIAL B. BEARING Ø24X5 BORE 5MA HUB 5,5	24	5	5MA	13	5,5	-
CT24X6F5M1AI	TURNED RADIAL B. BEARING Ø24X6 BORE 5 HUB1 (ACETAL RESIN RING - STAINLESS STEEL INNER)	24	6	5	12,5	1	-
CT24X8F5M2AB	TURNED RADIAL B. BEARING Ø24X8 BORE 5 HUB 2 (ACETAL RESIN RING - GALVANIZED INNER)	24	8	5	12,5	2	-
CT25X9F8M3½B	GALVANIZED TURNED RADIAL B. BEARING Ø25X9 BORE 8 HUB 3,5	25	9	8	12,5	3,5	-
CT28X12F6MAM3AB	TURNED RADIAL B. BEARING Ø28X12 BORE 6MA HUB 3 (ACETAL RESIN RING - GALVANIZED INNER)	28	12	6MA	E13	3	-
CT28X8F8M8B	GALVANIZED TURNED RADIAL B. BEARING Ø28X8 BORE 8 HUB 8	28	8	8	17	8	-
CT28X8F10M8B	GALVANIZED TURNED RADIAL B. BEARING Ø28X8 BORE 10 HUB 8	28	8	10	17	8	-
CT28X8FE11M8B	GALVANIZED TURNED RADIAL B. BEARING Ø28X8 EXAGON BORE 11 HUB 8	28	8	ES11	17	8	-
CT28X8F12M8B	GALVANIZED TURNED RADIAL B. BEARING Ø28X8 BORE 12 HUB 8	28	8	12	17	8	-
CT32X10F12I	STAINLESS STEEL TURNED RADIAL B. BEARING Ø32X10 BORE 12	32	10	12	-	-	-
CT32X9F8M3½B	GALVANIZED TURNED RADIAL B. BEARING Ø32X9 BORE 8 HUB 3.5	32	9	8	15	3,5	-
CT33F6X6M1AB	TURNED RADIAL B. BEARING Ø33X6 BORE 6 HUB 1 (ACETAL RESIN RING - GALVANIZED INNER)	33	6	6	12,5	1	-
CT35X11F15I	STAINLESS STEEL TURNED RADIAL B. BEARING Ø35X11 BORE 15	35	11	15	-	-	-
CT45X10F8M1½ABS	GREASED TUR. RADIAL B. BEARING Ø45X10 BORE 8 HUB 1,5-1 (ACETAL RESIN RING - GALVANIZED INNER)	45	10	8	15	1,5	1
CT50X9F10MAM3½	TURNED RADIAL B. BEARING Ø50X9 BORE 10MA HUB 3,5 (ACETAL RESIN RING - GALVANIZED INNER)	50	9	10MA	17	3,5	-

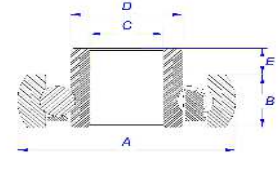
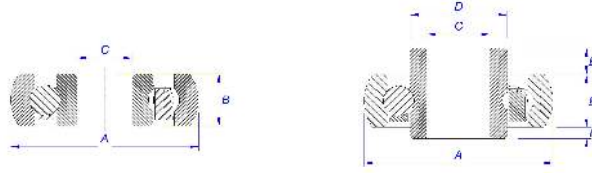
CMM ITALY SRL

30030 Mellaredo di Pianiga (VE) Via Tagliamento, 10 - Tel. 041 5190344 - Fax 0415194646
Mail: info@cmmitaly.com - www.cmmitaly.com



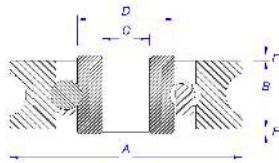
Turned radial ball bearings

TURNO ROUND RADIAL BALL BEARING



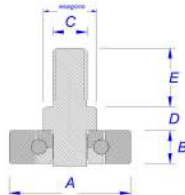
CODE	DESCRIPTION	A	B	C	D	E	F
CTB22X6F5MAM2AI	TUR.ROUND RADIAL B.B. Ø22X6 BORE 5MA HEXAGON HUB 2,5 (ACETAL RESIN RING-STAINLEES STEEL INNER)	22	6	5MA	ES13	2,5	-
CTB23X4F5M1½M2I	STAINLESS STEEL TURNED ROUND RADIAL B. BEARING Ø24X5 BORE 5 HUB 1,5 - 2	23	4	5	9	1,5	-
CTB24X4F7M2M1I	STAINLESS STEEL TURNED ROUND RADIAL B. BEARING Ø24X4 BORE 7 HUB 2 - 1	24	4	7	9	2	1
CTB24X5F5MAM5½I	STAINLESS STEEL TURNED ROUND RADIAL B. BEARING Ø24X5 BORE 5MA HUB 5,5	24	5	5MA	13	5,5	-
CTB24X8F6M3AI	TURNED ROUND RADIAL B. BEARING 24X8 BORE 6 HUB 3 (ACETAL RESIN RING - STAINLESS STEEL INNER)	24	8	6	6	3	-
CTB26X10F7B	GALVANIZED TURNED ROUND RADIAL B. BEARING Ø26X10 BORE 7	26	10	7	-	-	-
CTB30X11F8B	GALVANIZED TURNED ROUND RADIAL B. BEARING Ø30X11 BORE 8	30	11	8	-	-	-
CTB30X6F4M1½A	GALVANIZED TUR. ROUND RADIAL B. B. Ø30X6 BORE 4 HUB 1,5(ACETAL RESIN RING - GALVANIZED INNER)	30	6	4	12,5	1,5	-
CTB30X6F6MAM8AB	GALVANIZED TUR. ROUND RADIAL B. B. Ø30X6 BORE 6MA HUB 8 (ACETAL RESIN RING-GALVANIZED INNER)	30	6	6MA	12,5	8	-
CTB30X6F8M1½A	GALVANIZED TUR. ROUND RADIAL B. B. Ø30X6 BORE 8 HUB 1,5 (ACETAL RESIN RING - GALVANIZED INNER)	30	8	6	12,5	1,5	-
CTB44X8½F7MMB	GALVANIZED TURNED ROUND RADIAL B. BEARING Ø44X8,5 BORE 7 MM 0,25	44	8,5	7	17	0,25	0,25
CTB47X14F19M11B	GALVANIZED TURNED ROUND RADIAL B. BEARING Ø47X14 BORE 19 HUB 11 2RS	47	14	19	26	11	-
CTB50X9F7B	GALVANIZED TURNED ROUND RADIAL B. BEARING Ø50X9 BORE 7	50	9	7	-	-	-

GROOVE RADIAL BEARING



CODE	DESCRIPTION	A	B	C	D	E	F
CTG22X7F5M1AB	GALVANIZED GROOVE RADIAL B. B. Ø22X7 BORE 5 HUB 1 (ACETAL RESIN RING - GALVANIZED INNER)	22	7	5	11	1	
CTG40X9F8AS	GALVANIZED, GREASED GROOVE RADIAL B. B. Ø40X9 BORE 8 (ACETAL RESIN RING - GALVANIZED INNER)	40	9	8	-	-	

RADIAL BEARING WITH PIN



CODE	DESCRIPTION	A	B	C	D	E	HEXAGON
CT25X10P12MAB	GALVANIZED TURNED RADIAL B. BEARING Ø25X10 PIN 12MA HEXAGON 15	25	10	12MA	9	25	15
CT25X28P14MAB	GALVANIZED TURNED RADIAL B. BEARING Ø25X28 PIN 14MA HEXAGON 19	25	28	14MA	8	24	19
CT30X9P14MAB	GALVANIZED RURNED RADIAL B. BEARING Ø30X9 PIN 14MA HEXAGON 17	30	9	14MA	10	25	17
CT35X11P14MAB	GALVANIZED TURNED RADIAL B. BEARING Ø35X11 PIN 14MA HEXAGON 19	35	11	14MA	10	23	19
CT40X12P14MAB	GALVANIZED TURNED RADIAL B. BEARING Ø40X12 PIN 14MA HEXAGON 19	40	12	14MA	10	25	19
CT50X14P14MAB	GALVANIZED TURNED RADIAL B. BEARING Ø50X14 PIN 14MA HEXAGON 19	50	14	14MA	10	25	19

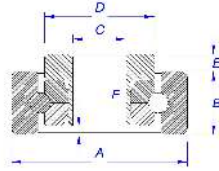
CMM ITALY SRL

30030 Mellaredo di Pianiga (VE) Via Tagliamento, 10 - Tel. 041 5190344 - Fax 0415194646
Mail: info@cmmitaly.com - www.cmmitaly.com



Turned radial ball bearings

CAGELESS RADIAL BEARING



CODE	DESCRIPTION	A	B	C	D	E	F
CT35X11F10M3½G	GALVANIZED CAGELESS RADIAL B. BEARING Ø35X11 BORE 10 HUB 3,5	35	11	10	25	3,5	-
CT35X11F15PRI	STAINLESS STEEL CAGELESS RADIAL B. BEARING Ø35X11 BORE 15	35	11	15	-	-	-
CT40X12F17PRI	STAINLESS STEEL CAGELESS RADIAL B. BEARING Ø40X12 BORE 17	40	12	17	-	-	-
CT40X15M2,9B	GALVANIZED CAGELESS RADIAL B. BEARING Ø40X15 BORE 12 HUB 2,9	40	15	12	25	2,9	3
CT40X15M2I	STAINLESS STEEL CAGELESS RADIAL B. BEARING Ø40X15BORE 12 HUB 2	40	15	12	25	2	2
CT40X15M4B	GALVANIZED CAGELESS RADIAL B. BEARING Ø40X15 BORE 12 HUB 4	40	15	12	25	4	2
CT47X14F20PRI	STAINLESS STEEL CAGELESS RADIAL B. BEARING Ø47X14 BORE 20	47	14	20	-	-	-
CT47X20F20M11PB	GALVANIZED CAGELESS RADIAL B. BEARING Ø47X20 BORE 20 HUB 11	47	20	20	28	11	-

SPECIAL RADIAL BEARING

IMAGE	CODE	DESCRIPTION
	CTPU44X6½F7MMB	GALVANIZED TOP RADIAL B. BEARING PUNTA Ø44X6,5 FORO 7 DOUBLE HUB 0,25
	CTPU44X8½F7MMB	GALVANIZED TOP RADIAL B. BEARING Ø44X8,5 FORO 7 DOUBLE HUB 0,25
	TRT38X10F18I	STAINLESS STEEL ROLLER HEAD Ø38X10 BORE 18
	CTG34X12MM7RSI	STAINLESS STEEL GROOVE RADIAL B. BEARING Ø34X12 DOUBLE HUB 7 2RS

CMM ITALY SRL

30030 Mellaredo di Pianiga (VE) Via Tagliamento, 10 - Tel. 041 5190344 - Fax 0415194646
Mail: info@cmmitaly.com - www.cmmitaly.com